



# How Do Israeli Occupation and Settlements Seize Palestinian Land?

# 2025

Vision Center for  
Political Development

**15.49** Million Palestinians Worldwide  
By the End of 2025

---

**1.86**

Million People  
in the Occupied  
Territory in 1948

**3.43**

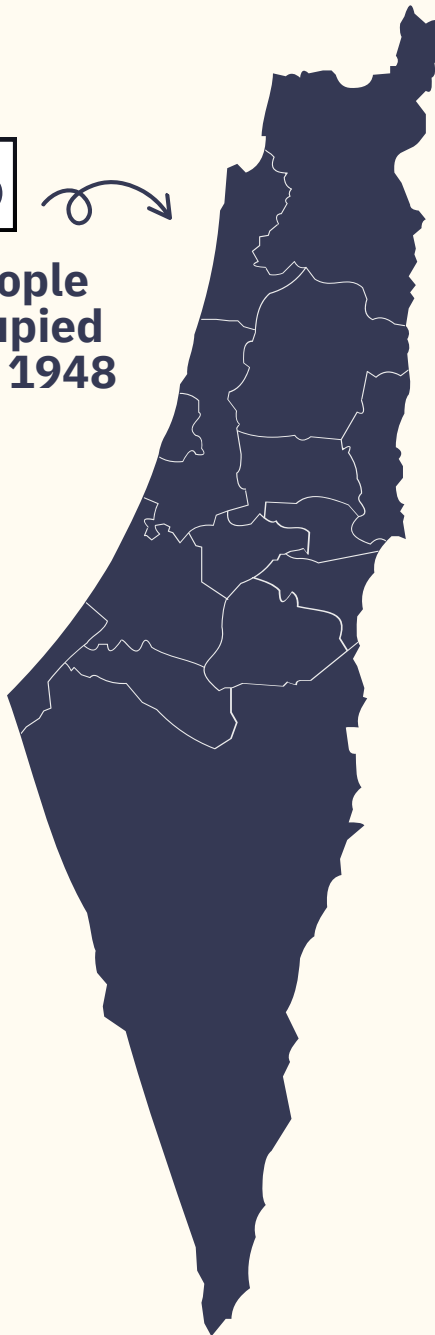
Million People  
in the West Bank

**2.13**

Million People  
in the Gaza Strip

**8.82**

Million People  
in the Diaspora



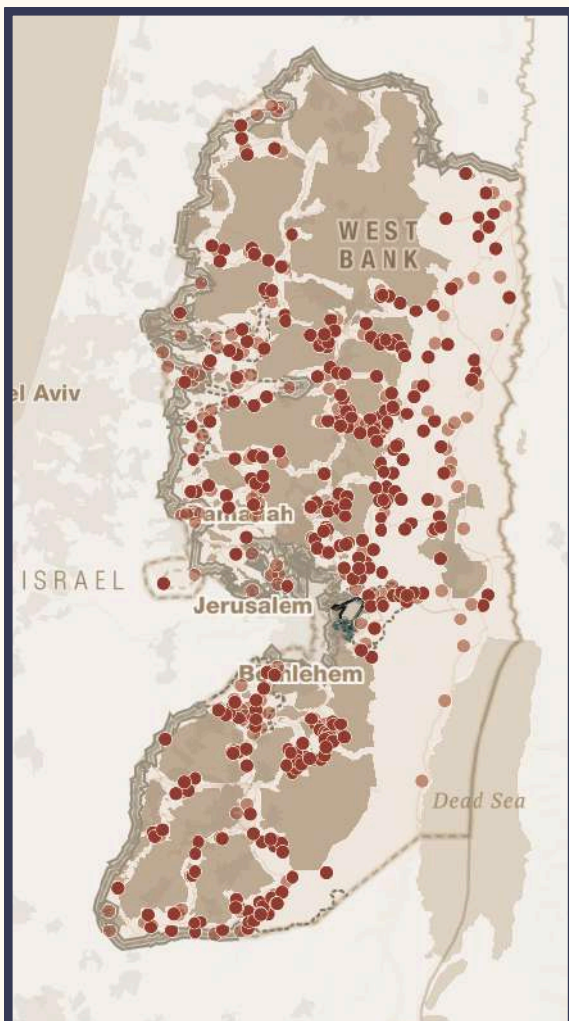
# Settlements

**166**

**Israeli Settlements**

**271**

**Israeli Outposts**



**MAP LEGEND**

- Settlements
- Outposts
- Areas A and B
- Area C
- Plan E1
- Planned Israeli-only roads
- Planned bypass road for Palestinians
- Planned fence
- Current barrier fence

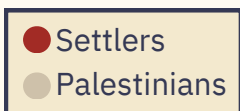
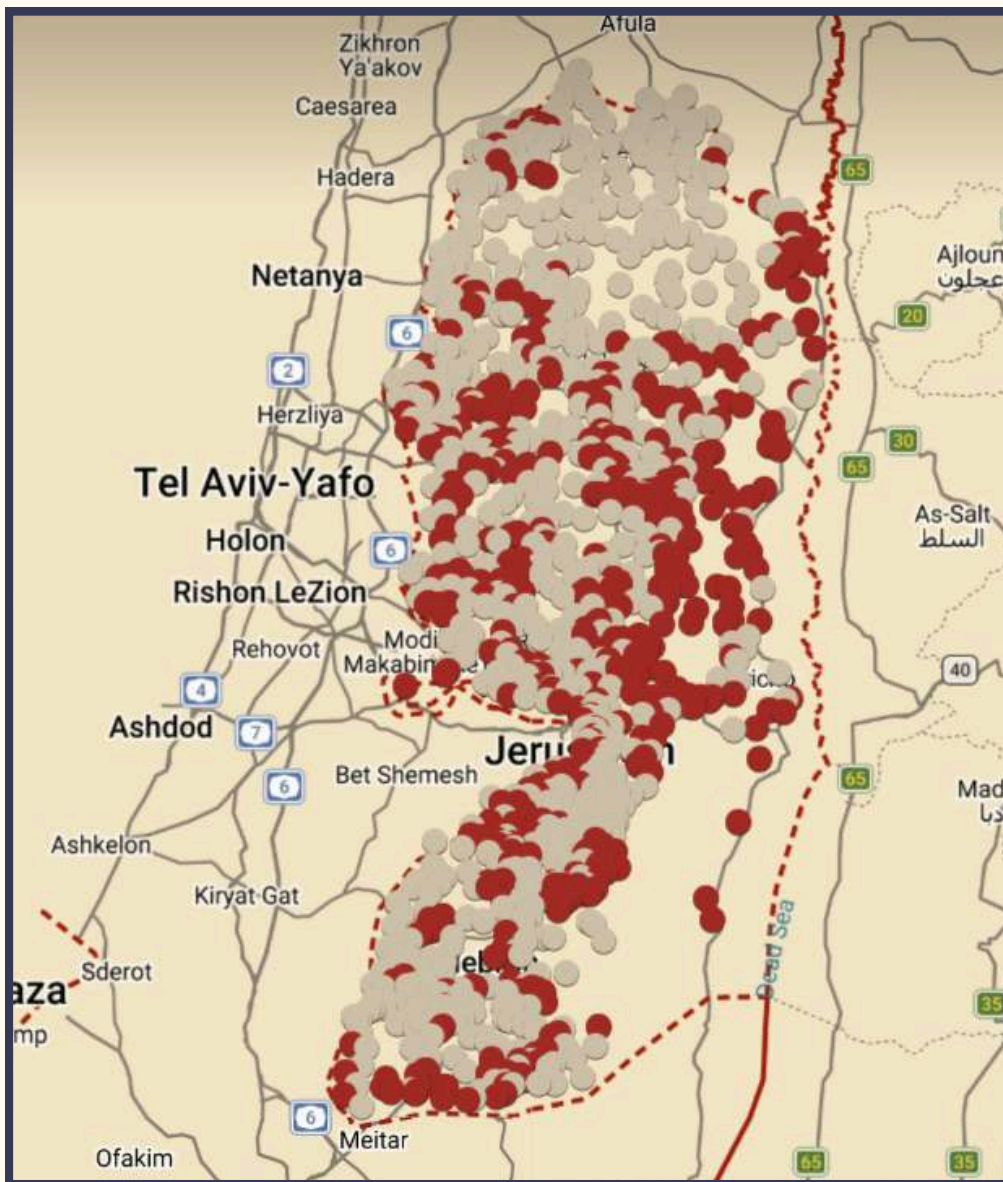
Settler farms in the West Bank control approximately **768,000** dunams, representing **14%** of the West Bank's area, and **70%** of this land has been seized over the past two and a half years.

# Settlements



**750,000**

**Israeli Settlers in the West Bank and East Jerusalem**





- Area A: Palestinian Authority
- Area B: Palestinian Authority, shared security control with "Israel"
- Area C: "Israel"

**34,979**

**Colonial Unit**



the planning committees of Israeli authorities have studied its construction plans since the beginning of 2025

**"Israel" de facto controls**



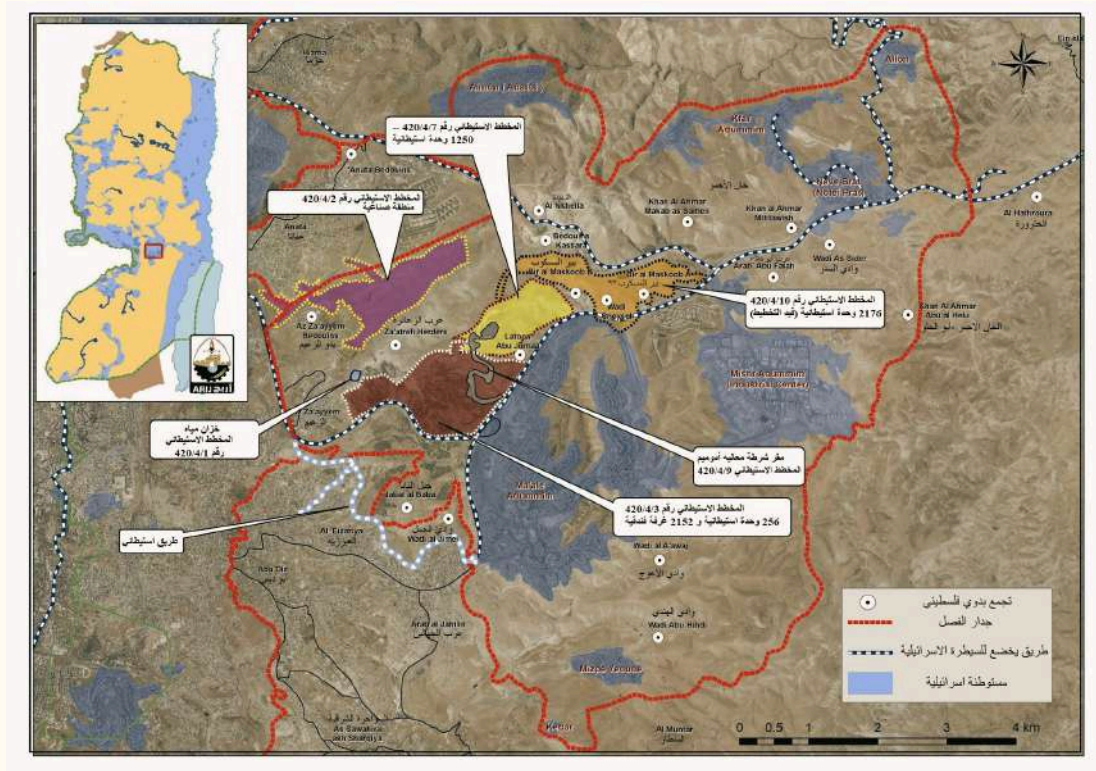
**41%**

**90%**

of the total area of the West Bank

From the Palestinian Valley

# Jerusalem and "E1"



► "E1" is an Israeli plan aiming to link Ma'ale Adumim settlement with the occupied city of Jerusalem and separate it from its Palestinian surroundings, with the goal of:

- Merging East Jerusalem with Ma'ale Adumim and turning them into a single urban block
- Cutting the geographic continuity between the northern and southern West Bank
- Paralyzing the possibility of developing a connected Palestinian urban corridor linking Ramallah, Jerusalem, and Bethlehem

This corridor represents the backbone of any future Palestinian state

# The Separation Wall

As of December 2022, approximately 65% of the Separation Wall in the West Bank had been completed.

When completed, its length is expected to reach 713 kilometers, with 85% of its route running inside the West Bank, isolating about 9% of its land, including East Jerusalem.

Only About

**15%**

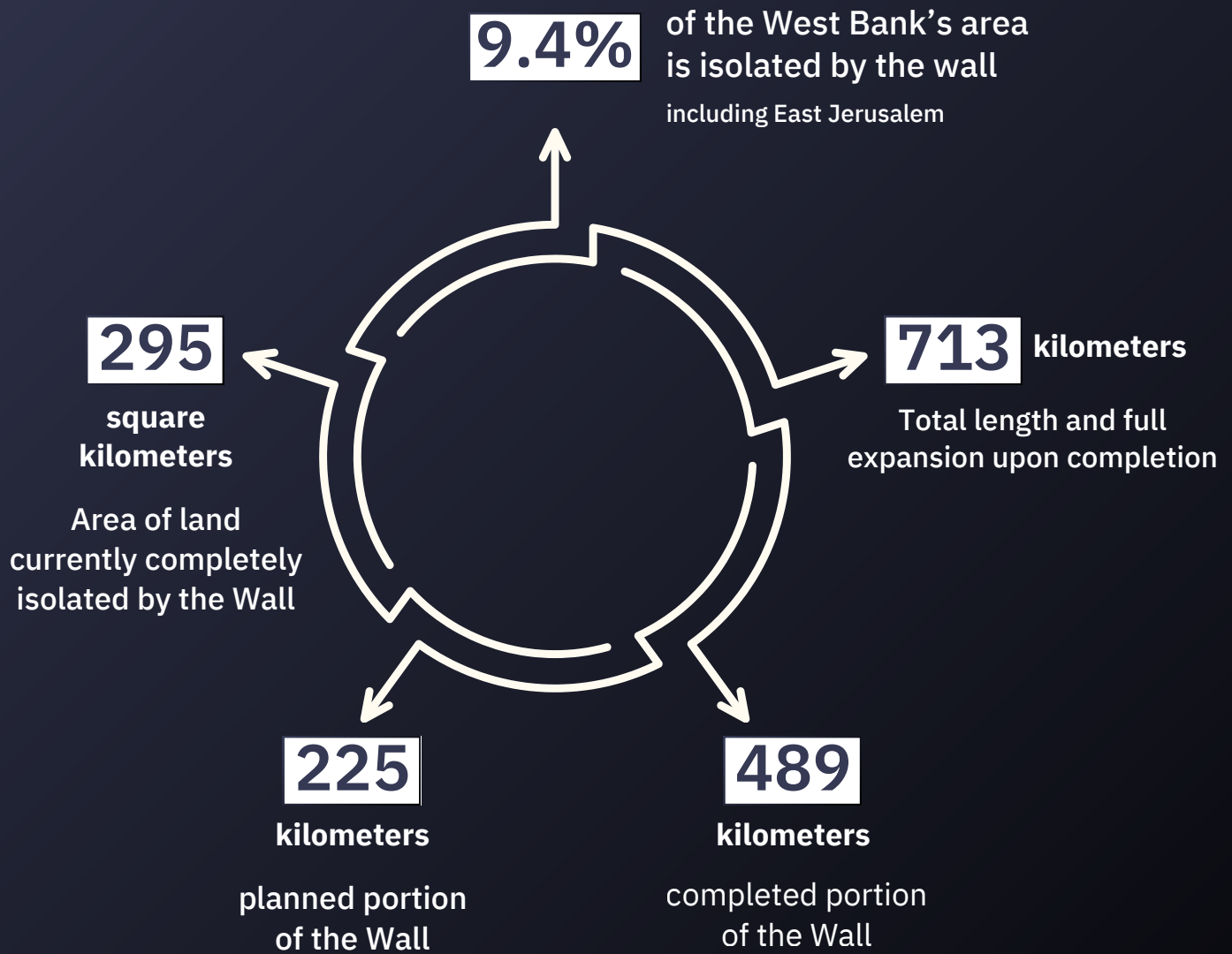
of the Separation Wall's route was built on the Green Line (the internationally recognized border between "Israel" and the West Bank).

About

**85%**

of its route was constructed inside the West Bank.





The Separation Wall effectively incorporates 71 settlements on the Israeli side and affects the lives of more than 85% of the settlers.

About ↪

**160**  
**thousand**

**Palestinians  
were forced  
out of  
the municipal  
boundaries of  
Jerusalem due  
to the Wall**



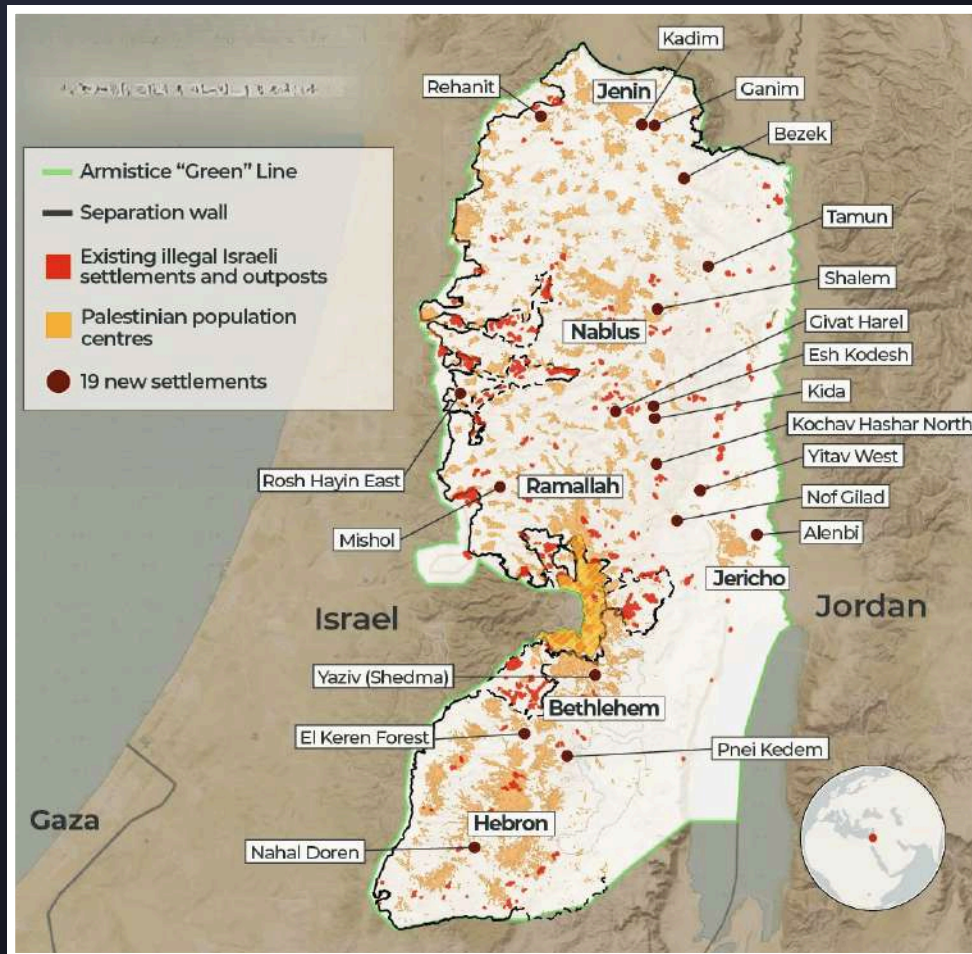
# Bypass Roads in West Bank and Jerusalem

**1,200** kilometers ➤

total length of bypass roads constructed by "Israel" in the West Bank

**5572.472** dunams ➤

of Palestinian land confiscated by "Israel" during 2025



# Israeli Checkpoints

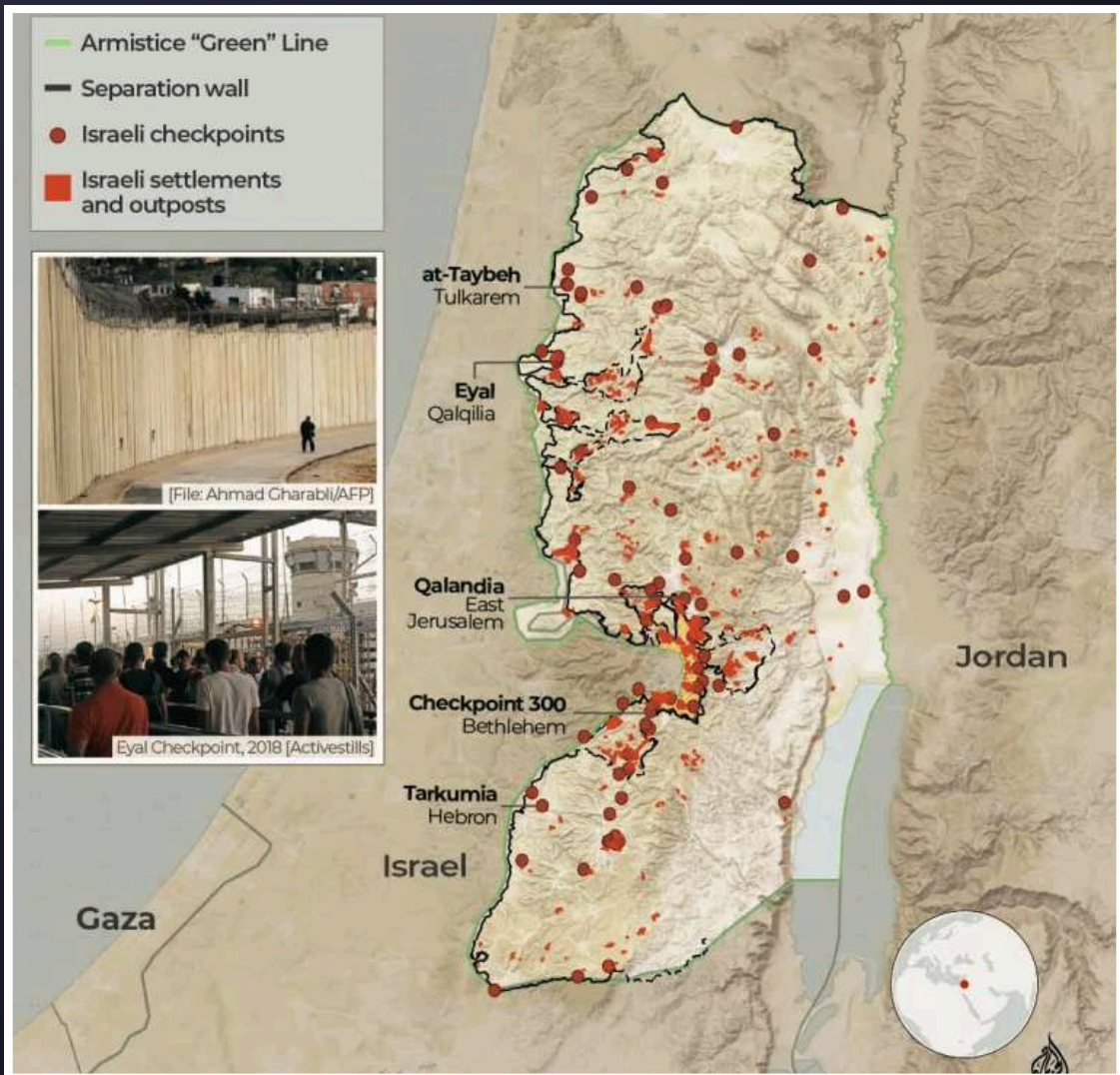
**2,102** ▶

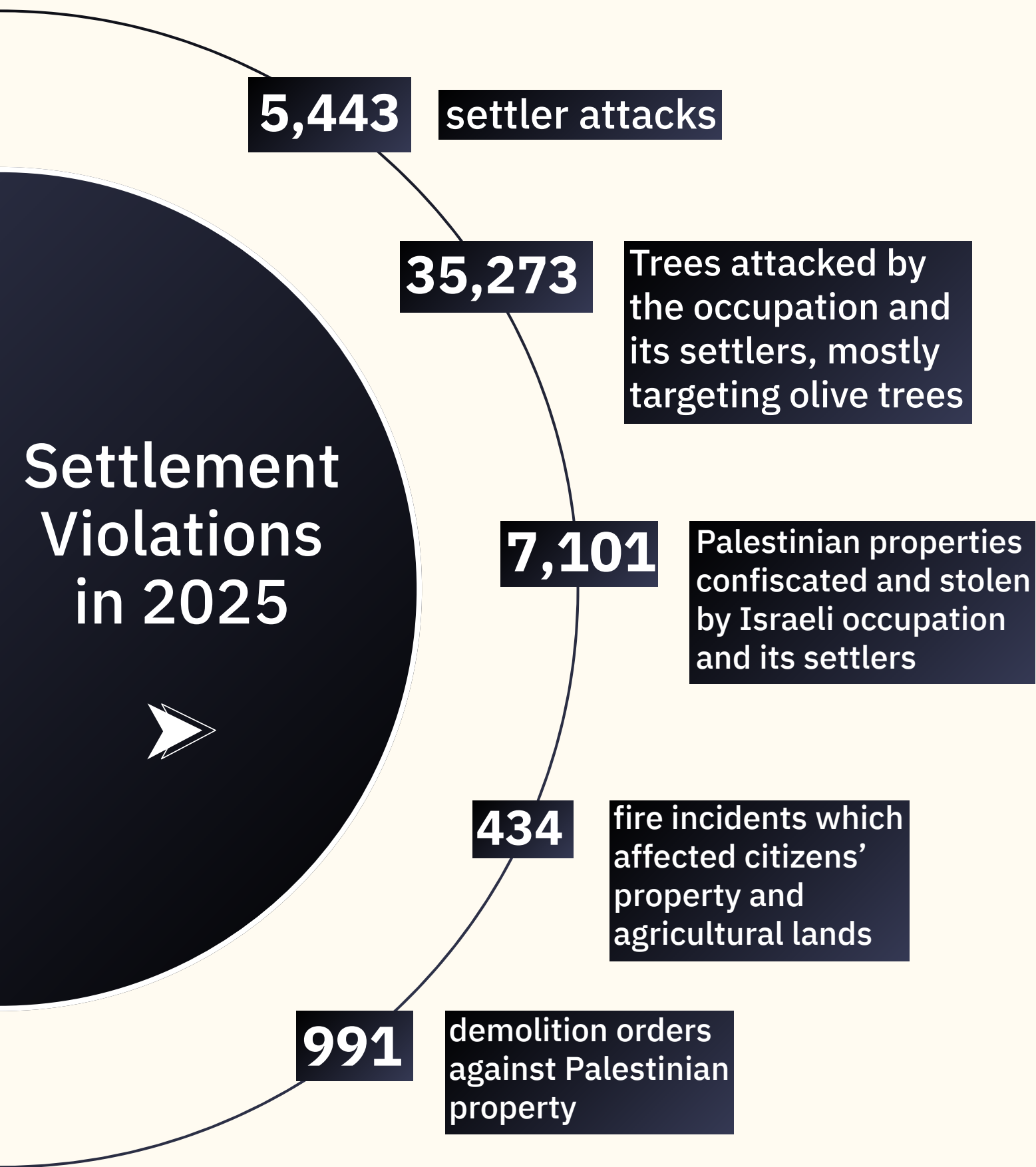
checkpoints and iron gates established by the Israeli Occupation Forces in the West Bank

including:



**132**  
iron gates







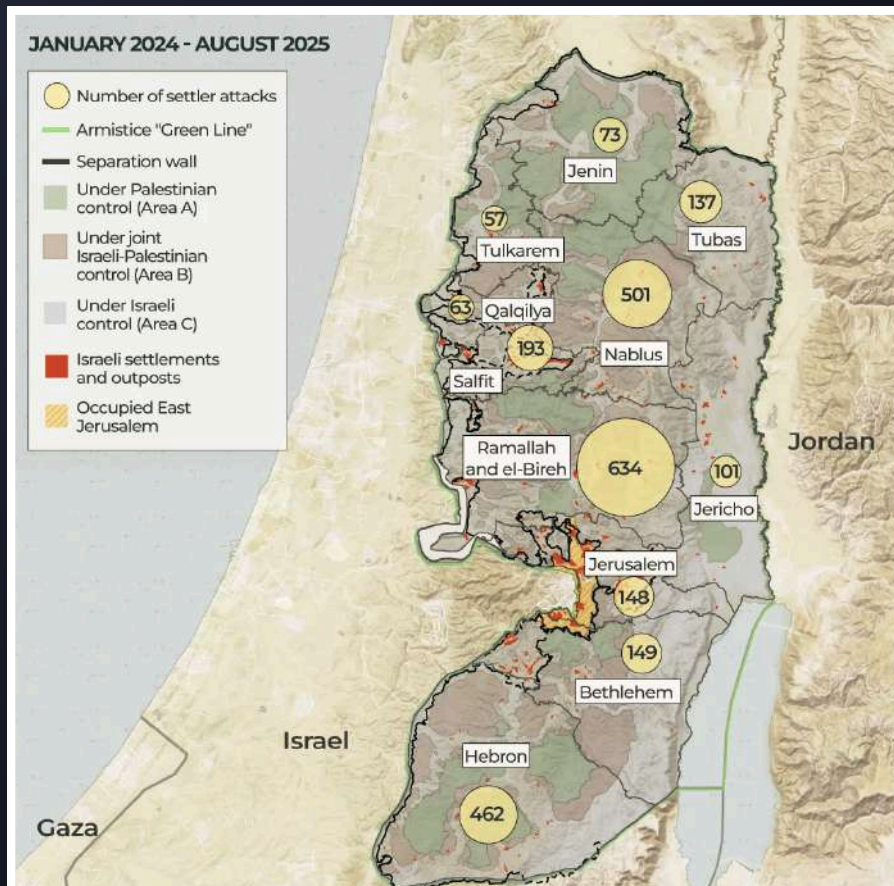
About ↪

# 23,837 Attacks

**in 2025**

amid an unprecedented escalation in violence by the Occupation's Forces, including Israeli settlers, against Palestinians in the West Bank and East Jerusalem

Attacks carried out by the Occupation's Forces and settlers at the governorate level ↙





**1,104**

in West Bank

**74,224**

in Gaza Strip

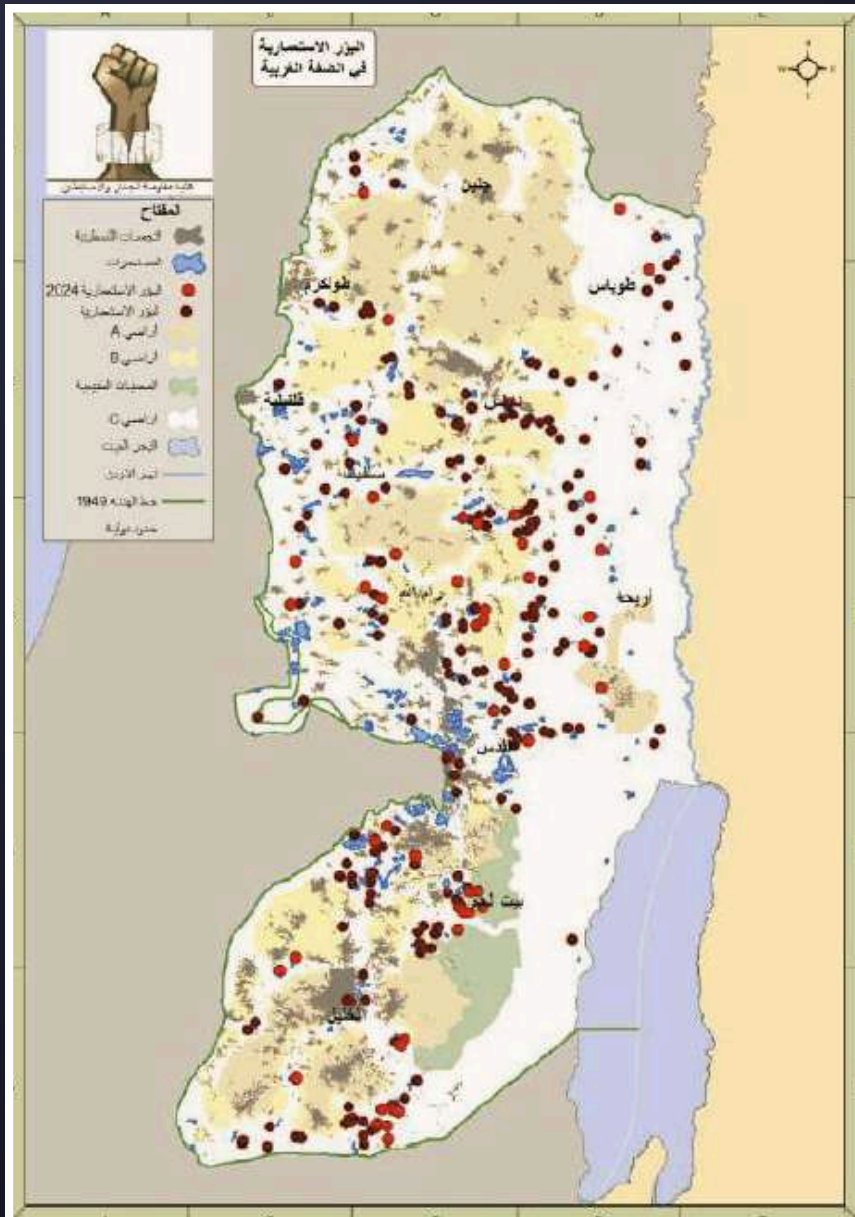
## **Palestinian martyrs killed by the Israeli Occupation Forces**

From October 7, 2023, until the end of 2025



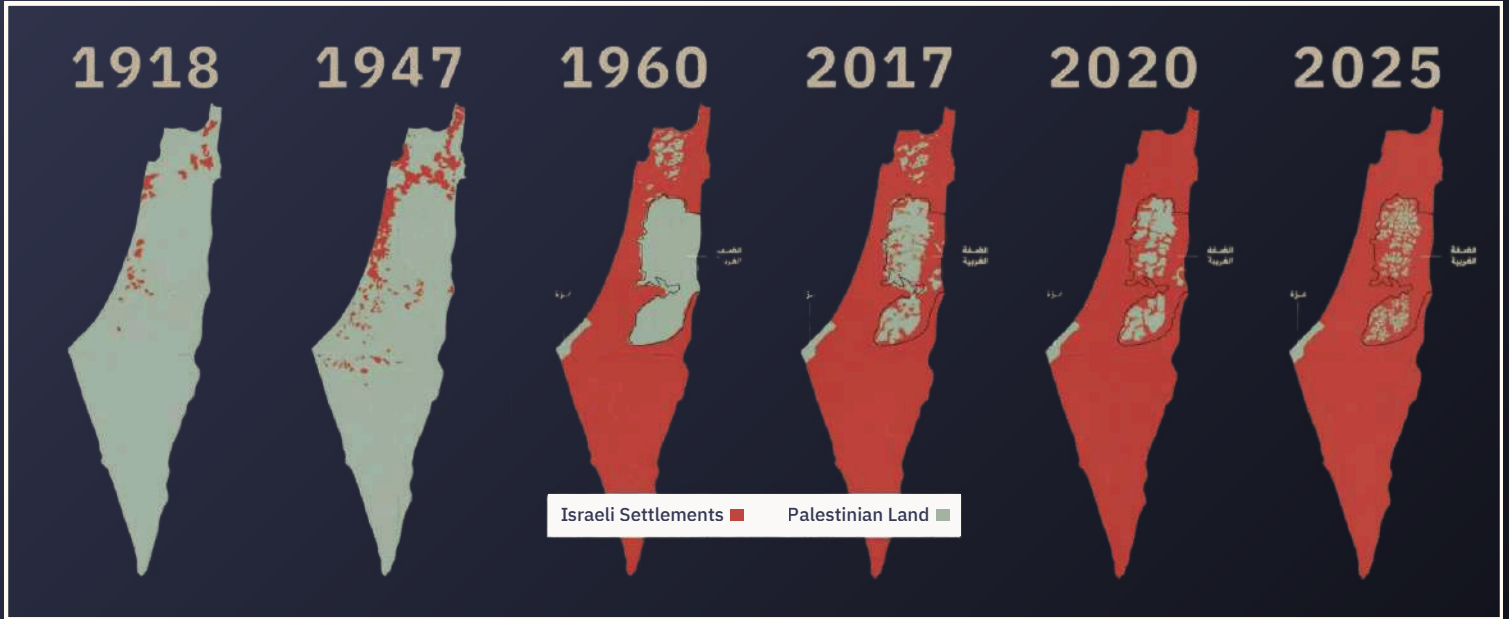
**1,231**  
dunams  
 Total area of lands  
 confiscated as  
 'State Lands'  
 in 2025

**786**  
dunams  
 Total area of land  
 seized by pastoral  
 settler outposts



Map showing the  
 distribution of  
 recent and previous  
 pastoral outposts in  
 the West Bank





Asharq Al-Awsat \*

**Dunams declared as 'State Lands' in the West Bank each year from 1998 to 2024:**

**28,045**

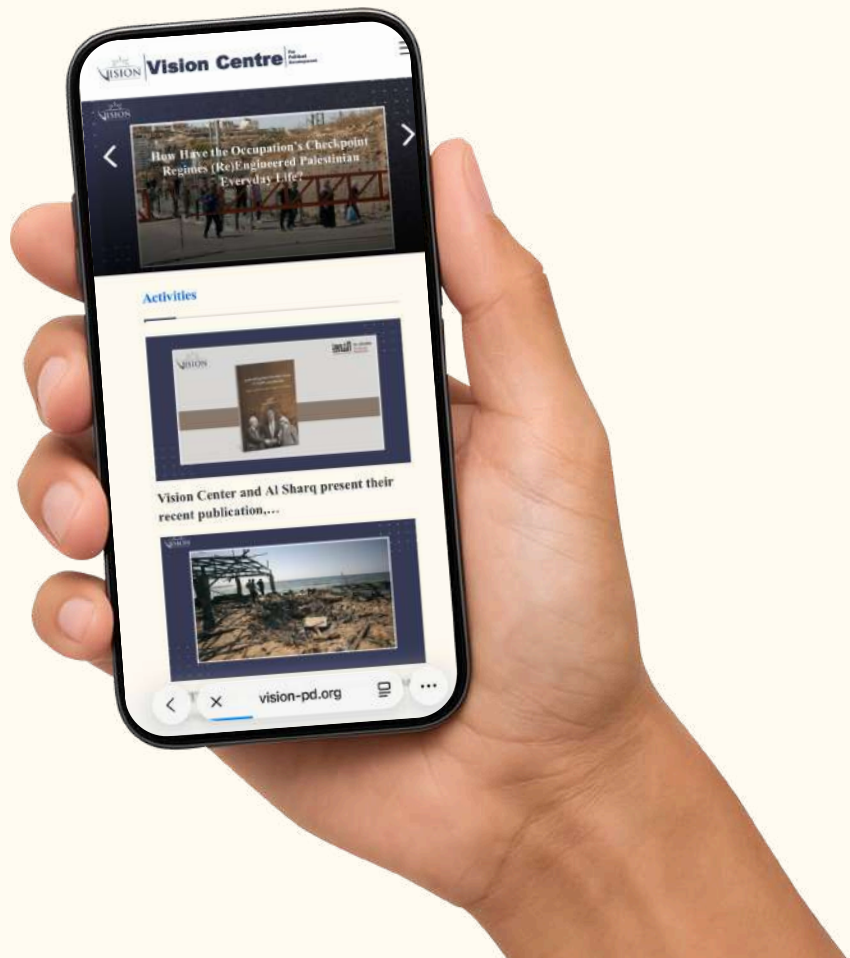
**Dunams declared as 'State Lands'**  
from 1998 until the end of 2022

**24,789**

**Dunams declared as 'State Lands'**  
between 2023 - 2024

# Vision Center for Political Development

Developing the political capabilities and capabilities of individuals, groups and parties in the region to serve the building of civil and democratic societies and states based on the principles of self-determination, freedom, equality and human dignity, deepening the meanings of moderation, pluralism, moderation and tolerance, thus helping to renounce violence and extremism and contribute to the achievement of peoples of their political and civil rights, particularly the Palestinian people.



 [www.vision-pd.org](http://www.vision-pd.org)

 [info@vision-pd.org](mailto:info@vision-pd.org)

 +902126310107